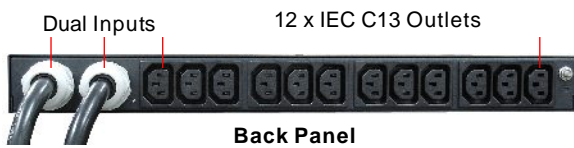
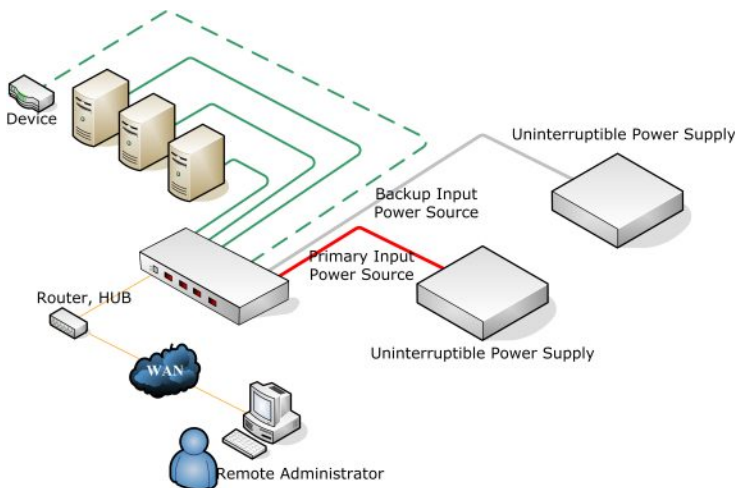


EXIVISION

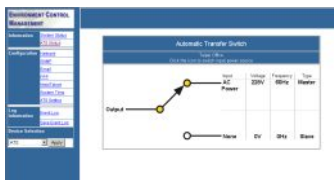
208V 30Amp Automatic Transfer Switch EXV-ATS 3020P-10N2



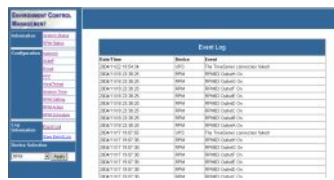
Connection Diagram



Software Interface



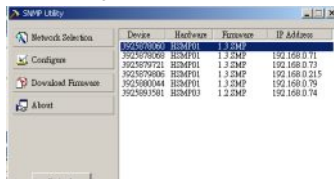
ATS Management



Event Log



SNMP Management



SNMP Utility

ATS - Functional description

Critical Equipment requires Continuous Power Availability

The EXV-ATS Automatic Transfer Switch is designed to support critical network and communications equipment where downtime is not an option — and space is at a premium. Its 1U or zeroU format is ideal for high density applications such as server racks and enclosures. It facilitates reliable and seamless switching of mains to redundant AC power and automatically reverts to mains as soon as possible.

Two Power Sources = Security

The EXV-ATS is a dual input, rackmountable 12 port power distribution unit (PDU) with a built in automatic transfer switch. It receives power from two independent AC power sources and utilizes a built-in automatic AC transfer switch to quickly switch between them. This provides AC power supply redundancy to critical computer or communications equipment in a rack environment.

The EXV-ATS is designed to be mounted in a 1U configuration within a rack, or can be side-mounted for zero-U spaces allowing it to be used in a wide variety of applications.

The EXV-ATS 3020P-10N2 provides twelve IEC-C13 receptacles, at 10a though the overall capacity of the EXV-ATS is 30A distributed across the four groups. Input power to the EXV-ATS is supplied by two 3m (nominal) cords, each terminated by a NEMA L6-30 plug. LED indicators on the front panel indicate whether utility or UPS power is being used. Output protection is provided by two 20A circuit breakers.

Built-in Ethernet Module

The EXV-ATS-3020P-10N2 has a built-in Ethernet module which provides power source information and switching/ restoral alarms remotely

EXV Power Management Technology

1. Centralized power management for all server platforms and Network devices.
2. Flexible three layer management structure.
3. Integrates with various brands of UPS and battery management products.
4. Multi-platform support for structured shutdown.

Features

Meter	True RMS Current Meter, Voltage, Frequency, Power Factor, Active Power, Apparent Power, Total kWh, Sub-total kWh.
Power Monitor	Total Power Monitoring by Meter, Web, SNMP, Free Bundle Software
Protocols	Http, Https, SNMP, DHCP, UDP
Alarm Thresholds	User-Defined Alarm Thresholds for Warning and Overload
Event Alert	Email, Trap, Audible Alarm
Temp./Humidity	Option Accessory
Power Action	Automatic Transfer Switch

Specifications

General

Output	(12) IEC320 C13 sockets, each group of 6 circuit-breaker protected
Input	(2) NEMA L6-30 plug Inlet; 3m cords

Communication

SSL Indication	(1) Yellow LED
DHCP Indication	(1) Green LED
Output Status	(2) Green LED
Input Status	(2) Green LED
Network	(1) RJ45 for Ethernet
Temp./Humidity	(1) RJ11 for ENV probe connection
Identification	1 Digits Seven Segments for Identification
Meter	3 Digits Seven Segments

Power Information

Voltage	+/- 2% @ 90V~260V
Active Power	+/- 2% @ 50W~5000W
Apparent Power	+/- 2% @ 50VA~5000VA
Frequency	+/- 2% @ 45~65Hz
Power Factor	+/- 0.02 @ 0.5~1.0
kWh	Range: 0.001kWh ~ 99999.999kWh Precision: +/-2% @ 50W~5000W, kh=1.0
Current	Range: 0A ~ 32A Resolu- tion: 0.1A Precision: +/-2% +/-0.1AMP

Operation

Nominal Voltage	200V ~208V
On-Line Voltage	180V~ 262V
Frequency	50/60Hz
Max. Output Current	30 Amp
Transfer Time	8~16ms
Operation Temp.	0 ~ 40 Celsius degree
Humidity	0% ~ 90%
Size	260 x 432 x 44.45 mm
Net Weight	5 kg

Regulatory Approvals

CE, EN 55022 Class A, EN 55024, EN 61000-3-2, EN 61000-3-3
FCC Part 15 Class A, ICES-003

