

115V 15Amp Static Transfer Switch EXV-STS 1511A-10N1

STS - Functional description

Critical Equipment requires Continuous Power Availability

The EXV-STS Automatic Transfer Switch is designed to support critical network and communications equipment where downtime is not an option — and space is at a premium. Its 1U or zeroU format is ideal for high density applications such as server racks and enclosures. It facilitates reliable and seamless switching of mains to redundant AC power and automatically reverts to mains as soon as possible.

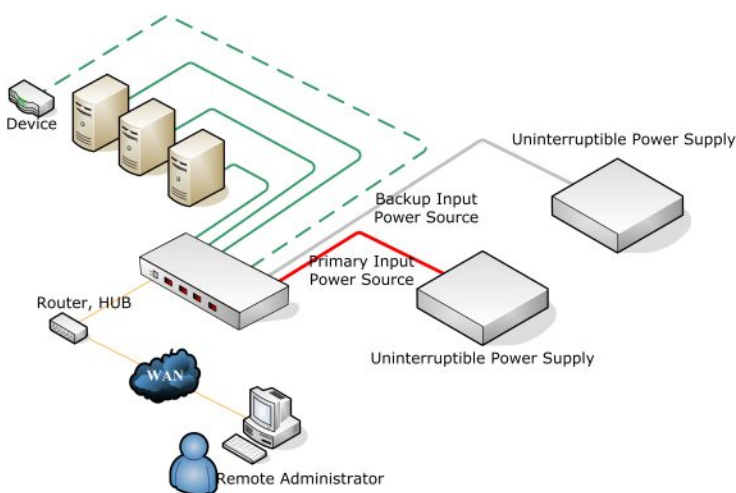
Two Power Sources = Security

The EXV-STS is a dual input, rackmountable 10 port power distribution unit (PDU) with a built in automatic transfer switch. It receives power from two independent AC power sources and utilizes a built-in automatic AC transfer switch to quickly switch between them. This provides AC power supply redundancy to critical computer or communications equipment in a rack environment.

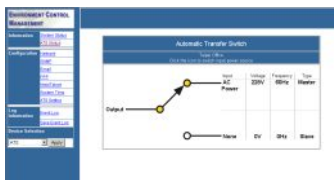
The EXV-STS is designed to be mounted in a 1U configuration within a rack, or can be side-mounted for zero-U spaces allowing it to be used in a wide variety of applications.

The EXV-STS 1511A-10N2 provides ten NEMA 5-15/20R sockets. The overall capacity of the EXV-STS 1511A-10N1 is 15A distributed across ten output sockets. Input power to the EXV-STS is supplied by two IEC320 C20 Inlet sockets, which connect to the supply by two 3m (nominal) cords, each terminated by a NEMA L6-30 plug. LED indicators on the front panel indicate whether utility or UPS power is being used.

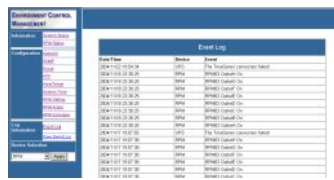
Connection Diagram



Software Interface



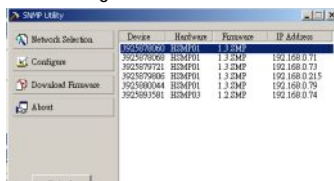
ATS Management



Event Log



SNMP Management



SNMP Utility

Specifications

General

Output	(10) NEMA 5-15/20R sockets
Input	(2) NEMA 5-15P plugs Inlet; 3m cords terminated to IEC320 C19/C20 connections

Communication

SSL Indication	(1) Yellow LED
DHCP Indication	(1) Green LED
Output Status	(2) Green LED
Input Status	(2) Green LED

Operation

Nominal Voltage	110V ~130V
On-Line Voltage	100V~ 143V
Frequency	50/60Hz
Max. Output Current	15 Amp
Transfer Time	8~16ms
Operation Temp.	0 ~ 40 Celsius degree
Humidity	0% ~ 90%
Size	260 x 432 x 44.45 mm
Net Weight	5 kg

Regulatory Approvals

CE, EN 55022 Class A, EN 55024, EN 61000-3-2, EN 61000-3-3
FCC Part 15 Class A, ICES-003

