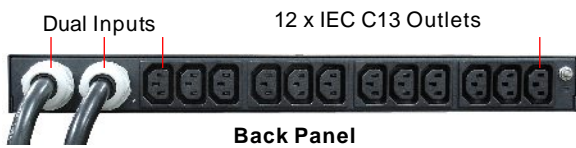
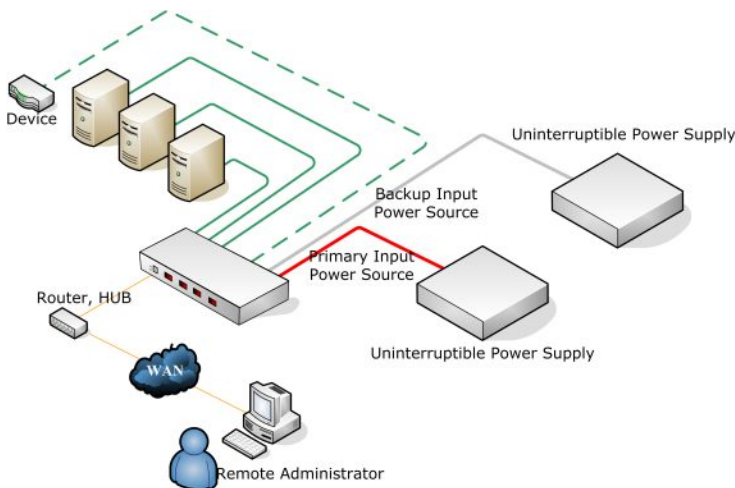


EXIVISION

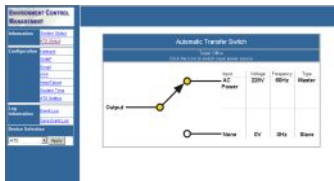
208V 30Amp Static Transfer Switch EXV-STS 3020P-10N2



Connection Diagram



Software Interface



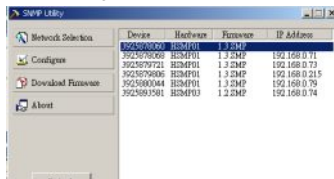
ATS Management



Event Log



SNMP Management



SNMP Utility

STS - Functional description

Critical Equipment requires Continuous Power Availability

The EXV-STS Automatic Transfer Switch is designed to support critical network and communications equipment where downtime is not an option — and space is at a premium. Its 1U or zeroU format is ideal for high density applications such as server racks and enclosures. It facilitates reliable and seamless switching of mains to redundant AC power and automatically reverts to mains as soon as possible.

Two Power Sources = Security

The EXV-STS is a dual input, rackmountable 12 port power distribution unit (PDU) with a built in automatic transfer switch. It receives power from two independent AC power sources and utilizes a built-in automatic AC transfer switch to quickly switch between them. This provides AC power supply redundancy to critical computer or communications equipment in a rack environment.

The EXV-STS is designed to be mounted in a 1U configuration within a rack, or can be side-mounted for zero-U spaces allowing it to be used in a wide variety of applications.

The EXV-STS 3020P-10N2 provides twelve IEC-C13 receptacles, at 10a though the overall capacity of the EXV-STS is 30A distributed across the four groups. Input power to the EXV-ATS is supplied by two 3m (nominal) cords, each terminated by a NEMA L6-30 plug. LED indicators on the front panel indicate whether utility or UPS power is being used. Output protection is provided by two 20A circuit breakers.

Specifications

General

Output	(12) IEC320 C13 sockets, each group of 6 circuit-breaker protected
Input	(2) NEMA L6-30 plug Inlet; 3m cords

Communication

SSL Indication	(1) Yellow LED
DHCP Indication	(1) Green LED
Output Status	(2) Green LED
Input Status	(2) Green LED

Operation

Nominal Voltage	200V ~208V
On-Line Voltage	180V~ 262V
Frequency	50/60Hz
Max. Output Current	30 Amp
Transfer Time	8~16ms
Operation Temp.	0 ~ 40 Celsius degree
Humidity	0% ~ 90%
Size	260 x 432 x 44.45 mm
Net Weight	5 kg

Regulatory Approvals

CE, EN 55022 Class A, EN 55024, EN 61000-3-2, EN 61000-3-3
FCC Part 15 Class A, ICES-003

